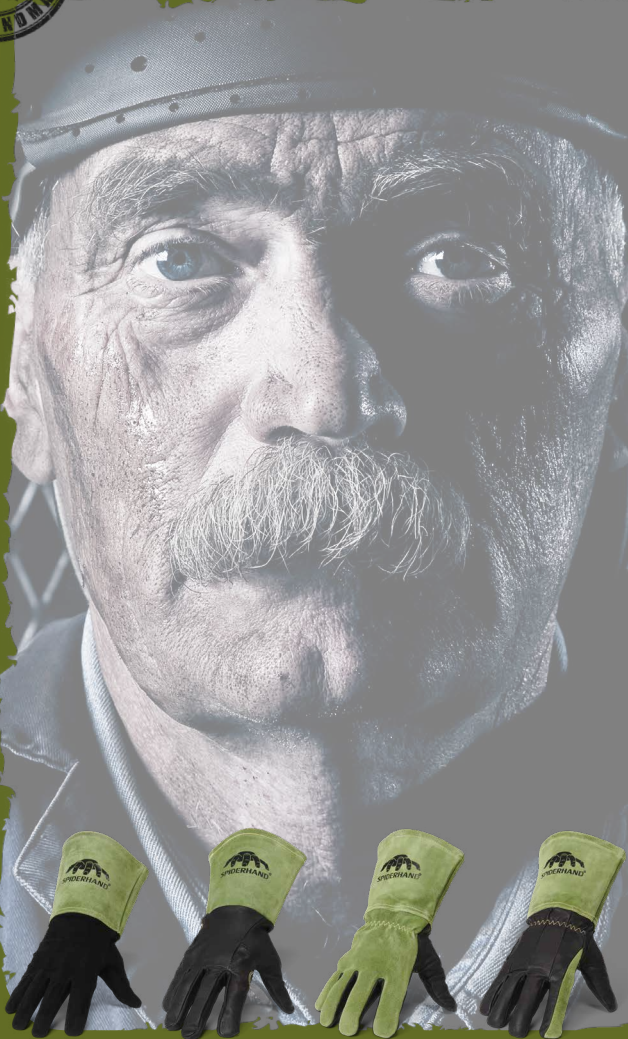


SPIDERHAND[®]



WWW.SPIDER-HAND.COM

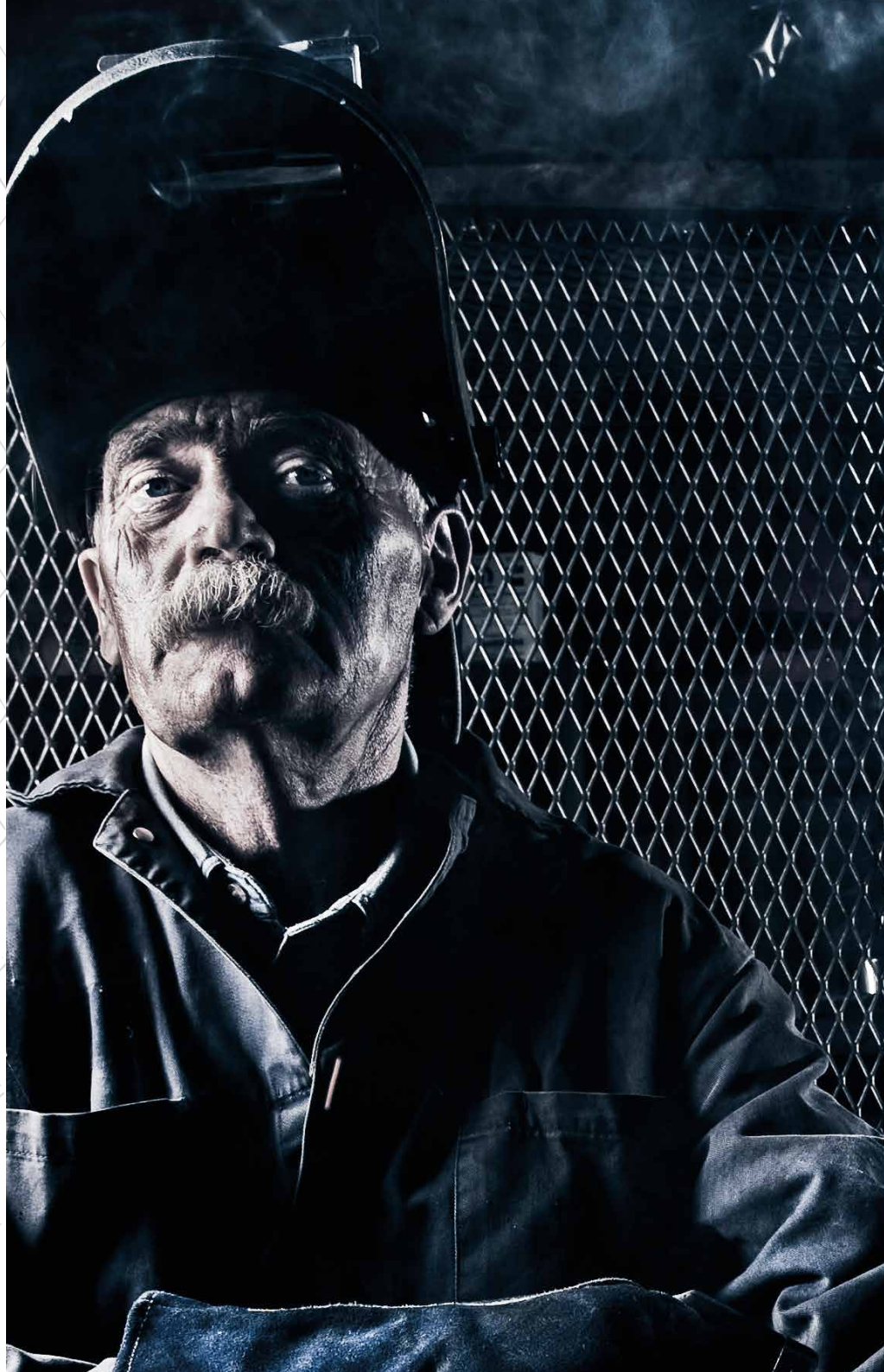
SPIDERHAND®

Our PREMIUM WELDING GLOVES are the perfect answer for heavy-duty custom and production welding.

These will provide you with the ultimate dexterity. Our gloves are all hand made with the finest and most durable Aniline leather and stitched with Kevlar® threading to guarantee optimal trigger and gun operation. We try to achieve a perfect fit for every hand to protect your 27 bones, 36 joints, 33 muscles and your skin while you work on your perfect weld.

SPIDERHAND® is designed to work in harmony with the most sophisticated welding torches used in the industry. Picking up welding rods has never been so easy because the dexterity of our TIG gloves are of the highest standards.

THE ULTIMATE TOUCH



TIG SUPREME

TIG

This glove is made of premium quality split **DEERSKIN** as a straight thumb model. With its extreme dexterity, this glove is unique in its kind. The flexible feel is a perfect fit for the finest TIG welders.

Approval: EN12477:2001+A1:2005 Type B

EN 407



413X4X

EN 388



3133X

EN 420



6 pair

Cat. II

DuPont™
CE Kevlar®

Article numbers:

SIZE 8 (S)	SPT01008
SIZE 9 (M)	SPT01009
SIZE 10 (L)	SPT01010
SIZE 11 (XL)	SPT01011
SIZE 12 (XXL)	SPT01012



- Extremely flexible
- Kevlar stitching
- Extra wrist protection
- Special straight thumb TIG model

TIG SUPREME +

TIG

A very durable premium quality full grain **GOATSKIN** TIG glove with padded palm. Ideal for situations when welding on higher amperages with more heat than you are used to do with the deerskin glove.

Approval: EN12477:2001+A1:2005 Type B

EN 407



413X4X

EN 388



2223X

EN 420



6 pair

Cat. II

DuPont™
CE Kevlar®

Article numbers:

SIZE 8 (S)	SPT02008
SIZE 9 (M)	SPT02009
SIZE 10 (L)	SPT02010
SIZE 11 (XL)	SPT02011
SIZE 12 (XXL)	SPT02012



- Comfortable padding
- Kevlar stitching
- Padded palm for ultimate grip
- Special TIG cut index and thumb model

MIG SUPREME

MIG

This premium quality full grain **GOATSKIN** palm MIG welding glove is a flexible and very durable glove. With the **COWHIDE** split back with fleece lining it can withstand higher temperatures, but with the goatskin palm it will preserve its flexibility and grip. MIG supreme is also an ideal glove for MMA welding.

Approval: EN12477:2001+A1:2005 Type A

EN 407



413X4X

EN 388



3223X

EN 420



6 pair

Cat. II

DuPont™
CE Kevlar®

Article numbers:

SIZE 8 (S)	SPM02008
SIZE 9 (M)	SPM02009
SIZE 10 (L)	SPM02010
SIZE 11 (XL)	SPM02011
SIZE 12 (XXL)	SPM02012



- Extra Wrist protection
- Kevlar stitching
- Goat grain leather palm
- Wing thumb model

MIG SUPREME +

MIG

An outstanding MIG glove with the best comfortable and flexible characteristics. Made of premium quality full grain **GOATSKIN** with insulated padding. Extremely durable and a delight wearing all day long.

Approval: EN12477:2001+A1:2005 Type A



413X4X



4133X



6 pair

Cat. II

DuPont™

CE Kevlar®

Article numbers:

SIZE 8 (S)	SPM01008
SIZE 9 (M)	SPM01009
SIZE 10 (L)	SPM01010
SIZE 11 (XL)	SPM01011
SIZE 12 (XXL)	SPM01012



- Reinforced palm
- Kevlar stitching
- Heat insulated full lining
- Keystone thumb model
- Extra wrist protection

Different leathers mean different characteristics

COWHIDE: With its thickness cowhide is perhaps the most popular leather for MIG welding. Its thickness offers some degree of heat resistance with really good dexterity.

GOATSKIN: Goatskin is a very soft and flexible leather and offers a great sense of touch and great abrasion resistance. Used with full insulated lining this leather is ideal to combine with cowhide on the back of the hand for MIG welding.

DEERSKIN: The softest and most supple leather, deerskin offers a superior sense of touch. Because of the thickness of the leather, Deerskin will not offer the heat resistance you might want, but ideal in the lower amperages.

SELECT YOUR SIZE

EN 420



Size	S / 8	M / 9	L / 10	XL / 11	XXL / 12
CM	20,6	21,8	23	24,2	25

Measure your hand just above your thumb. This will give you the circumference that correspond with the size above.

EN 388



Digit	Test resistance score	1	2	3	4	5	6
1st	Abrasion (no. cycles)	100	500	2000	8000		
2nd	Blade cut (index)	1,2	2,5	5,0	10,0	20,0	
3rd	Tear (Newton)	10	25	50	75		
4th	Puncture (Newton)	20	60	100	150		
5th	TDM cut resistance(Newton)	A2	B5	C10	D15	E22	F30

EN 407



Digit	Test resistance
1st	Burning Behavior
2nd	Contact heat
3rd	Convective heat
4th	Radiant heat
5th	Small splashed of molten metal
6th	Large quantities of molten metal

The level of each number (from 0 to 4) corresponds with the resistance level against the risk in question

X = not tested

0 = below the minimum performance level

EN12477	Type	Type A	Type B
EN420	Dexterity *	1	4
EN1149-2	Electrical insulation	$\geq 10^5 \Omega$	$\geq 10^5 \Omega$
EN388	Resistance to abrasion (A)	2	1
	Resistance to cutting (B)	1	1
	Resistance to tearing (C)	2	1
	Resistance to puncture (D)	2	1
EN407	Resistance to flammability (A)	3	2
	Contact heat (B)	1	1
	Convection heat (C)	2	X
	Welding drops (E)	3	2

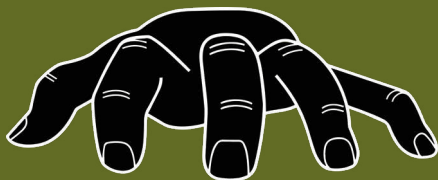
Gloves that meet standard EN 12477 must meet the following minimum requirements



Don't waste any more time using uncomfortable and stiff welding gloves. It is time to protect yourself with high quality comfortable SPIDERHAND[®] gloves.

**TRY ME ON..
NOW!**

For all certificates and datasheets visit our website www.spider-hand.com



SPIDERHAND[®]

**THE
ULTIMATE
TOUCH**

Your dealer:



Riconlas B.V. | Glasblazerstraat 15 | 2984 BL
Ridderkerk | The Netherlands

WWW.SPIDER-HAND.COM