

SFE-25/50/75

STATIONARY UNIT WITH ELECTROSTATIC FILTER

Wall or ceiling mounted filter unit with electrostatic filter, consisting of a separate ionisation and collector section. Depending on the specific application, pre and final filters have to be selected and ordered separately. The unit can be installed in an extraction duct or used in a source extraction system with arms and fan(s).

The SFE is eminently suitable for treating welding fumes originating from oil treated steel. The integrated oil collector ensures easy oil removal.

Several SFE units can be combined to extend the filtration capacity.



APPLICATIONS

The SFE range is intended to be used for the following applications:

- all common welding processes
- oil mist
- heavy oil mist in welding fume



Do **not** use the SFE range for the following applications or in the following circumstances:

- arc-air gouging
- aluminium laser cutting
- extraction of aggressive fumes and gases (e.g. from acids, from alkaline, from soldering paste containing lithium)
- extraction of hot gases (more than 45°C/113°F continuously)
- grinding aluminum and magnesium
- flame spraying
- extraction of cement, saw dust, wood dust etc.
- sucking cigarettes, cigars, oiled tissues and other burning particles, objects and acids
- explosive environments or explosive substances/gases



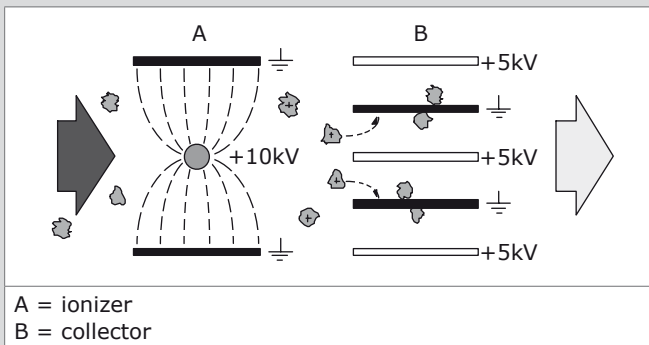
SPECIFICATIONS

	SFE-25	SFE-50	SFE-75
Physical dimensions and properties			
Dimensions:			
• height	630 mm	630 mm	630 mm
• width	560 mm	1010 mm	1460 mm
• depth	660 mm	660 mm	660 mm
Weight (net)	60 kg	100 kg	140 kg
Material housing	epoxy coated steel		
Colour	grey RAL 7035		
Filters			
Filter package:			
• FIS (ionizer)	1	2	3
• FCS (collector)	1	2	3
Material:	aluminium		
• ionizer	aluminium		
• collector	aluminium		
Max. filtration capacity	2500 m ³ /h	5000 m ³ /h	7500 m ³ /h
Filter surface	14,2 m ²	28,4 m ²	42,6 m ²
Pre/final filters	to be selected/ordered separately		

	SFE-25	SFE-50	SFE-75
Pressure drop	< 150 Pa	< 175 Pa	< 250 Pa
Electrical data			
Supply voltage	230-400V/1-3ph/50-60Hz		
Power consumption	35 W	40 W	50 W
Control voltage	24 VAC	24 VAC	24 VAC
Control fuse	2.0 AT	2.0 AT	2.0 AT
Voltage:			
• ionizer	+5 kV	+5 kV	+5 kV
• collector	+10 kV	+10 kV	+10 kV
Protection class	IP 55	IP 55	IP 55
Ambient conditions			
Operating temperature:			
• min.	5°C (41°F)		
• nom.	20°C (68°F)		
• max.	45°C (113°F)		
Max. relative humidity	80%		
Outdoor use allowed	no		
Storage conditions	<ul style="list-style-type: none"> • 5-45°C (41-113°F) • relative humidity max. 80% 		
Product combinations (choice required)			
Prefilters:			
• SAF	• aluminium filter (standard)		
• SOD	• demister for oilmist application		
Final filters:			
• SAF	• aluminium filter (standard)		
• SSF	• progressive synthetic filter (filter class G3)		
• SCF	• activated carbon filter for odour control		
• SBF	• synthetic bag filter (additional final filter; filter class F8)		
Options			
Oil disposal device	oil drainer	oil drainer	oil drainer
Outlet grid	OG-25	OG-50	

	SFE-25	SFE-50	SFE-75
Connection piece	RP-315/25	RP-400/50 RP-450/100	
Remote control • with timer	RC-MSA RC-MSA/T	RC-MSA RC-MSA/T	RC-MSA RC-MSA/T
Additional unit with bag filter	SFM-25	SFM-50	SFM-75
■ Scope of supply			
Filter unit (incl. ionizer + collector, excl. pre and final filter) - Electrical diagram - Manual - Square key 6 mm			
■ Order information			
Article no.:			
<i>Airflow left-right</i>			
• 230V/1ph/50Hz	7940040000	7941040000	7942040000
• 400V/3ph/50Hz	7940042000	7941042000	7942042000
<i>Airflow right-left</i>			
• 230V/1ph/50Hz	7940140000	7941140000	7942140000
• 400V/3ph/50Hz	7940142000	7941142000	7942142000
Number/ package	1	1	1
■ Shipping data			
Gross weight (1 pc)	75 kg	115 kg	155 kg
Max. number/ pallet	6	3	3
• packing dimensions	• 80 x 130 x 210 cm	• 80 x 120 x 210 cm	• 80 x 160 x 210 cm
• gross weight	• 375 kg	• 315 kg	• 435 kg
Harmonized Tariff Code	8421.39.2090		
Country of origin	Netherlands		

ELECTROSTATIC FILTER PRINCIPLE



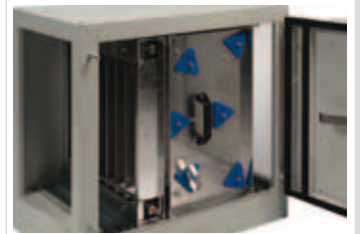
APPROVALS/CERTIFICATES



Directive 2011/65/EC (RoHS)
valid as of 8 June 2011

FEATURES

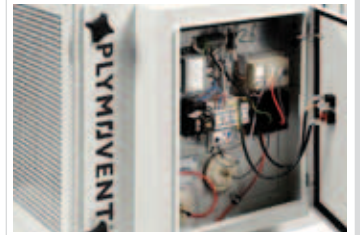
Constant extraction level
due to open structure



High voltage indicator
light



Easy access to electro
part



Product type

SFE-25/50/75

Article no.

refer to order information

Product category

stationary filter units

Version

190712/C

Always check the latest version on www.plymovent.com.