

## MONOGO

### STATIONARY FILTER UNIT WITH HOSE TUBE ARM

The MonoGo is a stationary welding fume filter with built-in fan and a hose tube arm (EconomyArm). It contains a disposable filter package.

The MonoGo has been designed for occasional welding activities (approx. 1 coil of solid wire or 7,5 kg/16.5 lbs of electrodes per month) and TIG welding.



### APPLICATIONS

The MonoGo is intended to be used for the following applications:

- MIG-MAG/GMAW welding
- TIG welding
- FCAW welding
- stick/MMAW welding
- grinding
- polishing
- finishing



### SPECIFICATIONS

#### Physical dimensions and properties

Material (housing):	electro-zinc coated steel (according to DIN EN 10152)
• steel grade	• DC01+ZE
• steel grade no.	• 1.0330
Colour	yellow RAL 1004 grey RAL 7011
Weight (net), excl. arm	
Mains cord	not included

#### Extraction arm

Type	EconomyArm (EA)
Material	hose tube
Length:	
• EA-2	• 2 m
• EA-3	• 3 m
• EA-4	• 4 m

Weight:	
• EA-2	• 11 kg (24.3 lbs)
• EA-3	• 13 kg (28.7 lbs)
• EA-4	• 15 kg (33.1 lbs)

#### Filters

Pre filter cassette:	
• material	• polyester
• filter surface	• 1 m <sup>2</sup> (10.8 ft <sup>2</sup> )
• efficiency	• G2 according to EN 779
• washable	• no
HEPA filter cassette:	
• material	• glass fibre
• filter surface	• 15 m <sup>2</sup> (161 ft <sup>2</sup> )
• efficiency	• HEPA E12 according to EN 1822:2009
• washable	• no

#### Welding fume class

W3	according to ISO 15012-1:2013
----	-------------------------------

#### Performance

Fan type	radial
Extraction capacity (incl. extraction arm)	max. 850 m <sup>3</sup> /h (500 CFM)
Fan speed	2800 rpm
Noise level (according to ISO 3746)	67 dB(A)

#### Electrical data

Power consumption	1,1 kW (1.5 HP)
Available connection voltages	• 115V/1ph/50Hz (115) • 115V/1ph/60Hz (116) • 230V/1ph/50Hz (215)
Motor design	IEC
Energy efficiency	<i>n.a. for single phase motors</i>

#### Ambient and process conditions

Process temperature:	
• min.	• 5°C (41°F)
• nom.	• 20°C (68°F)
• max.	• 70°C (158°F)
Max. relative humidity	90%
Suitable for outdoor use	no
Storage conditions	• 5-45°C (41-113°F) • relative humidity max. 80%

#### Scope of supply

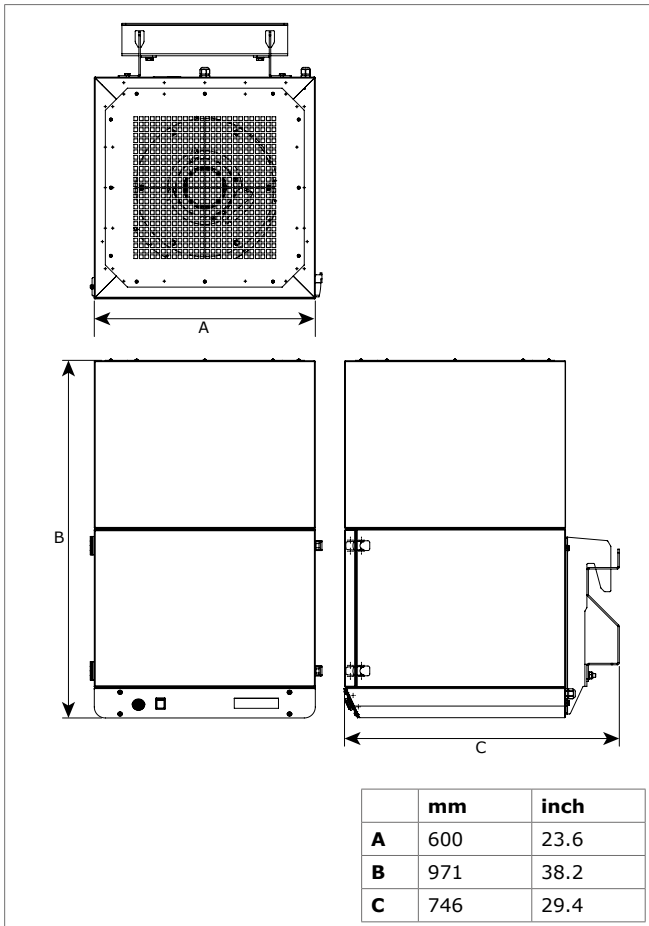
Stationary filter unit, incl. fan and wall bracket – Extraction arm (pre-assembled; excl. hose tube) – Hose tube – Hose clamp (2) – Rotating flange – Arm swivel ring, incl. rubber collar – Extraction hood – Hood collar with safety mesh – Mounting material – Switch box

#### Order information

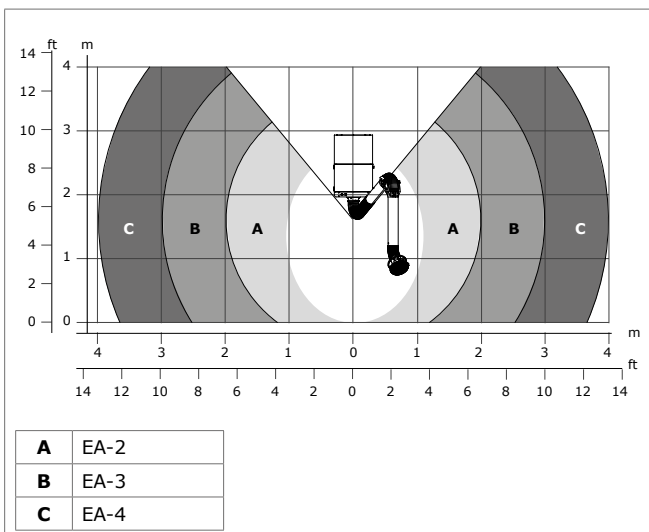
Article no.:	MonoGo:
• 0000111456	• MonoGo/2m (115)
• 0000111457	• MonoGo/2m (116)
• 0000111455	• MonoGo/2m (215)
• 0000111477	• MonoGo/3m (115)
• 0000111478	• MonoGo/3m (116)
• 0000111476	• MonoGo/3m (215)
• 0000111489	• MonoGo/4m (115)
• 0000111490	• MonoGo/4m (116)
• 0000111488	• MonoGo/4m (215)
•	•

Number/package	1
<b>Shipping data</b>	
Gross weight (incl. pallet)	
Packing dimensions (incl. pallet)	
Max. number/pallet	2
Harmonized Tariff Code	8421.39.2090

## DIMENSIONS



## WORKING RANGE



## FEATURES & BENEFITS



## APPROVALS/CERTIFICATES

	Directive 2011/65/EC (RoHS) valid as of 8 June 2011

### Application restrictions

Do **not** use the product for the following applications or in the following circumstances: polishing applications in combination with grinding, welding or any other application that generate sparks (fibres from polishing or abrasive flap disks are highly flammable and pose a high risk of filter fires when exposed to sparks) | aluminium laser cutting | oil mist | heavy oil mist in welding fume | arc-air gouging | extraction of aggressive fumes and gases (e.g. from acids, from alkaline, from soldering paste containing lithium) | extraction of hot gases (more than 70°C/158°F continuously) | grinding aluminum and magnesium | flame spraying | extraction of cement, saw dust, wood dust etc. | sucking cigarettes, cigars, oiled tissues and other burning particles, objects and acids | explosive environments or explosive substances/gases

Product type

**MonoGo**

Article no.

refer to Order information

Product category

stationary filter units

Version

060117/A

Always check the latest version on [www.plymovent.com](http://www.plymovent.com)